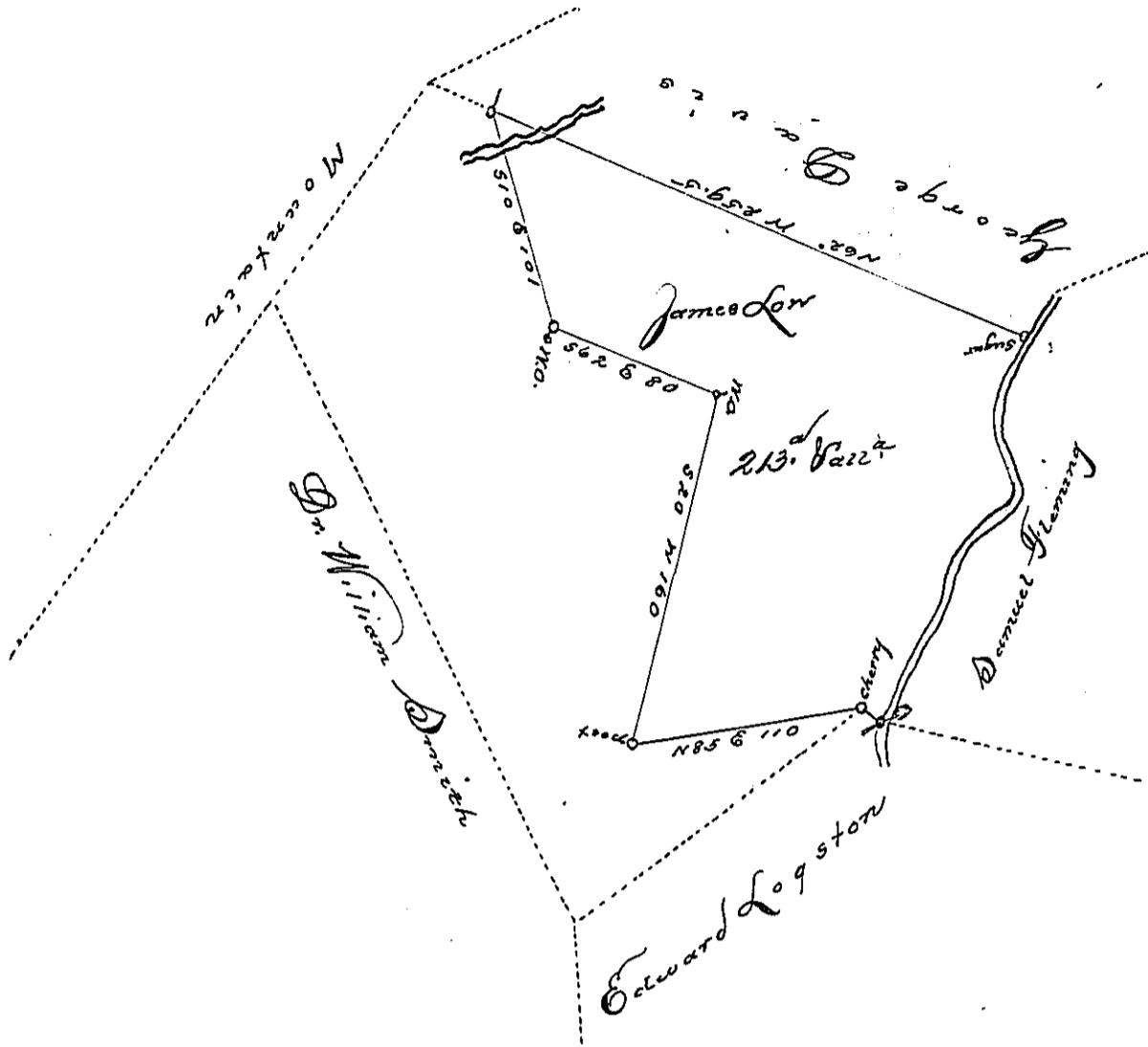


Courses and Distances down the Creek
from the Cherry to Sugar tree

- S. 52. E. 19 to Willow
- N. 14. E. 14
- N. 33. E. 53
- N. 23. E. 16
- N. 53. E. 42
- N. 12. W. 40
- N. 33. E. 20
- N. 14. W. 15 to Sugar tree



Situated on the West Side of the South Branch of the Frankstown Creek. Including a large Deer lick in Frankstown Township Bedford County, and Surveyed the 26th Day of January 1787 In pursuance of a warrant Dated the 20th day of September 1762.

Note the Doted lines represent a Survey in the name of John Palmer made formerly for Doct. Smith

George Woods D.S.

John Lukins Esq.
S.J.

IN TESTIMONY that the above is a copy of the original remaining on file in the Department of Internal Affairs of Pennsylvania, made conformably to an Act of Assembly approved the 16th day of February, 1833, I have hereunto set my Hand and caused the Seal of said Department to be affixed at Harrisburg, this

sixth day of July 1897

James W. Patton
Secretary of Internal Affairs.